

WING P4.7

inflatable-solutions.com

WING
INFLATABLES

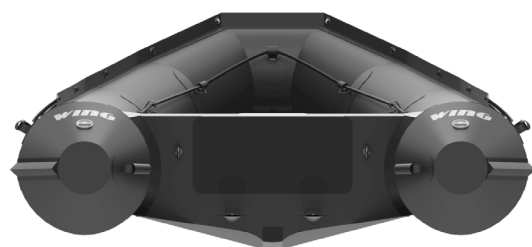
Fielded around the globe, the P4.7 is the premier craft for Special Forces operators. Its size and compatibility fit the envelope for fixed-wing, rotary air, subsurface, land and shipboard deployment.

The P4.7 is designed to include auto inflation and underwater caching systems for each of deployment. The craft can be deflated and sunk to the bottom of a body of water using the cache system and remain there until re-inflated with integrated inflation system.

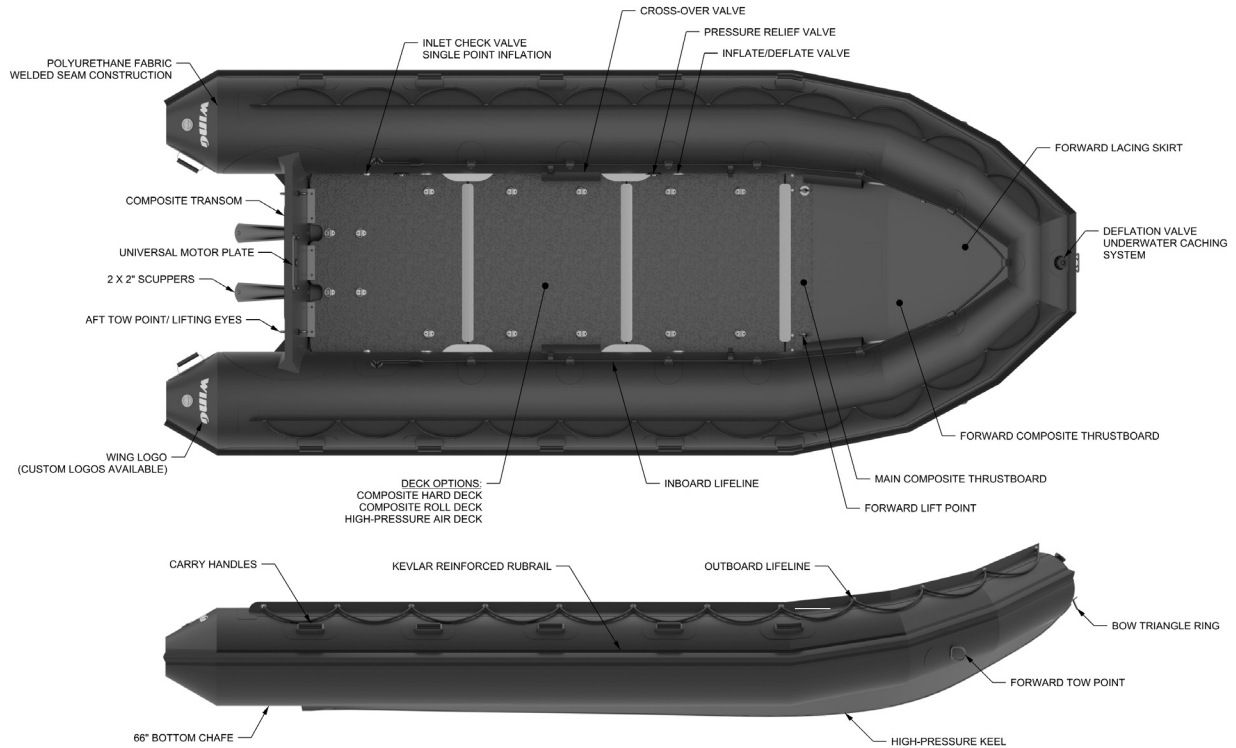
Attachment systems, logos and colors are customizable to ensure the craft meets the mission need. End-users may choose from several color options—black, red, orange, blue, grey, and drab green and any department name or logo can be added to the side. All components are composite, marine grade aluminum or 316 passivated stainless steel.

Craft Features

- We design and manufacture the Wing P Series craft to meet end-user operational requirements. Understanding their need lets us build craft specific to the mission.
- All Wing products are manufactured in the US using US-sourced materials at our ISO-9001-certified factory in Arcata, CA. No other inflatable craft meets these standards.
- Wing uses proprietary polyurethane-coated polyester material, which has three times the puncture and abrasion resistance of Hypalon—the current material used for inflatable craft manufacturing. Special Operations Maritime Forces put forward a technical memorandum for Ship Systems and Programs Directorate (Document CDNSWC-TM-20-93-78), which compares Hypalon (CSM) and polyurethane-coated fabrics (PU).
- Total Lifecycle Cost: With superior welded—not glued—fabric, the craft's lifespan may exceed ten years when properly maintained. All components are composite, marine grade aluminum or 316 passivated stainless steel. Wing also offers an unheard-of five-year warranty with each craft. With top-of-the-line materials and manufacturing processes, a five-year warranty and a long-term lifespan, the Wing P Series craft will outlast all others on the market.
- Aliphatic TPU and UV Enhancement: Not only are all Wing P Series craft built with aliphatic polyurethane fabric, which is lighter, more stable and offers enhanced UV protection, but they also have a UV-enhanced Flex Tough coating. This coating comes in several colors, allowing the end-user to pick a specific color for their mission set.
- Hull Shape: Sharper bow shape, truncated tail cones, and increased dead rise and buoyancy tube pressure all improve the performance of the P Series craft over other inflatable hull types. Operational missions, including swift water rescue, over-the-horizon transits, surf passages, shallow water operations and closed quarter maneuvers, benefit from the P series craft hull design.
- Tracking Strakes vs. Speed Tubes: Current P Series craft have tracking strakes—triangular profiles on the underside of the port and starboard main buoyancy tubes—instead of speed tubes, an older technology that allows a lower-pressure conventional craft to have a marginal amount of additional buoyancy. The improved Wing P Series hull design increases the craft's performance without unnecessarily adding lower buoyancy tubes.



WING P4.7



DESCRIPTION	P4.7
Deck Options	Composite Hard Deck, Roll Deck, Drop Stitch Air Deck.
Overall Length	15'5" (4.7m)
Overall Beam	6'6" (1.98m)
Internal Length	12'3" (3.73m)
Internal Beam	3' (.92m)
Tube Diameter	20" (.51m)
Number of Chambers	5 + Keel
Usable Deck Space	34 ft ² (3.26 sq m)
Craft Weight - Empty	180lbs (82kg)
Craft Weight with Drop Stitch Air Deck	255lbs (116kg)
Craft Weight with Aluminum Slats	281lbs (128kg)
Craft Weight with Composite Slats	265lbs (120kg)
Craft Weight with Full Hard Deck	280lbs (127kg)
Folded Dimensions	54" * 29.5" (.64m * .75m * 1.37m) - With Air Deck
Transom Height	20" (.5m)
Max Payload	2760lbs (1250kg)
Person Capacity	10
Max HP Rating (Hard Deck/Roll Deck)	65 HP
Max Engine Weight	320lbs (145kg)
Draft w/ Load	10" (.25m)
IMCI - CE Certified	

Additional Information



Technical Resources



Contact
inflatablesolutions.com